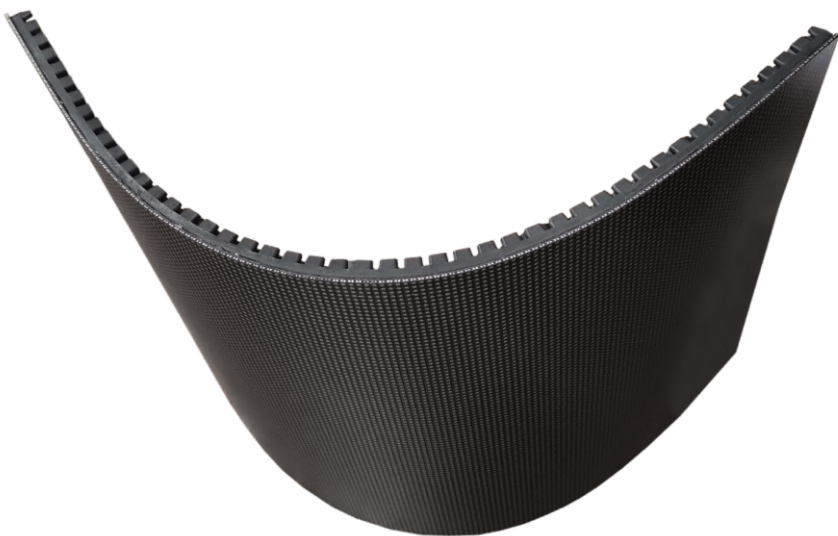


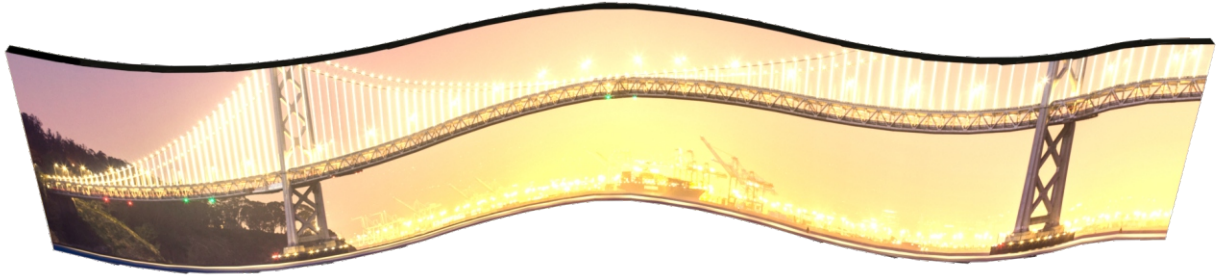
Leading the
LED screens integrated
solutions provider



Media Flexible™ Series
Indoor LED Display

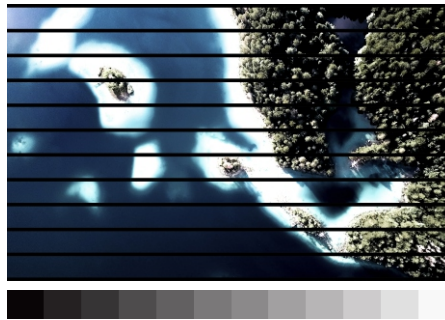
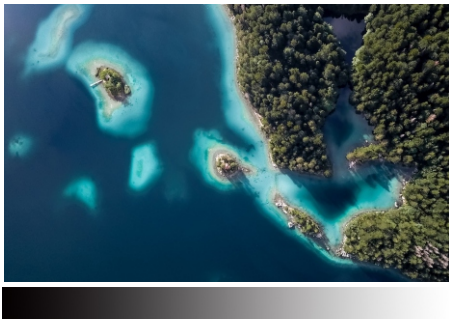
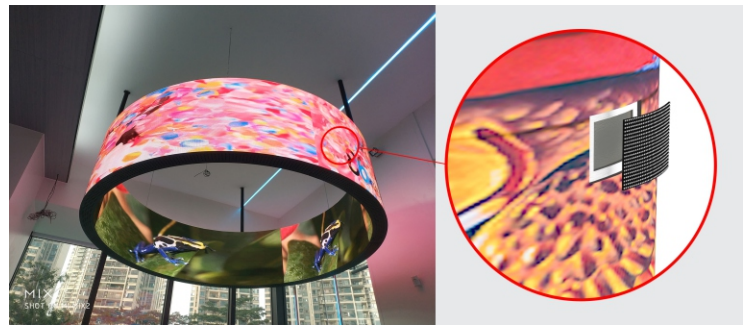


Features



- Super thin and strong flexibility, it can be installed at any angle of bending and swing, suitable for any concave, convex surface, artistic modeling.

- Front maintenance design of magnetic suction, it can be assembled and disassembled independently, easy and convenient to operate.



- High grayscale, high refresh, high contrast.

- Widely applied to different scene, LED themed sculptures, irregular buildings, stage performances, fashion shows, bars, themed venues and other creative applications.



Parameters

	ITEM	MFS-1.5	MFS-1.8	MFS-2	MFS-2.5	MFS-2.6	MFS-3	MFS-4	MFS-5
LED Module	LED	SMD 3 IN 1							
	Pixel Pitch (mm)	1.5625	1.8605	2	2.5	2.604	3	4	5
	Module Resolution (WxH)	128x96	172x86	128x64		96x48	80x40	64x32	
	Module Size (WxH)	200x150	320x160	256x128	320x160	250x125	240x120	256x128	320x160
	Module Weight (kg/pcs)	0.2-0.3							
	Module Quantity (WxH)	Customized based on project requirements							
Cabinet	Cabinet Resolution	Customized based on project requirements							
	Cabinet Size (WxH mm)	Customized based on project requirements							
	Pixel Density	409,600	288,906	250,000	160,000	147,456	111,111	62,500	40,000
	Weight (kg/m ²)	32							
	Cabinet Material	Iron							
	Ingress Protection	IP30							
Electrical Parameter	Maintenance	Front Service only							
	Color Temperature (K)	3200-12000 (Adjustable)							
	Brightness (nit)	600-800				700-1000			
	View Angle	H.140° / V.140°							
	Contrast Ratio	4000:1							
	Max Power Consumption(W/m ²)	600						550	
	Average Power Consumption(W/m ²)	200						185	
	Working Voltage(V)	AC110/220V							
Usage Environment	Refresh Rate (HZ)	≥3840							
	Life (H)	50,000							
	Working Temperature (°C)	-10°C ~ +40°C							
	Storage Temperature (°C)	-20°C ~ +60°C							
	Working Humidity(RH)	10 ~ 60%							
	Storage Humidity(RH)	10 ~ 60%							
Application	Indoor Only								

Zhongbo reserves the right of interpretation for the parameters.



SHENZHEN ZHONGBO PHOTOELECTRIC CO.,LTD

Address: 3rd Floor, 5th Building, Fulongte Technology Park, Huaxing Road, Dalang, Longhua District, 518109, Shenzhen, Guangdong, P.R.China.

Tel phone: 0086-755-29043232

Website: <https://www.zhongbo-gd.com>